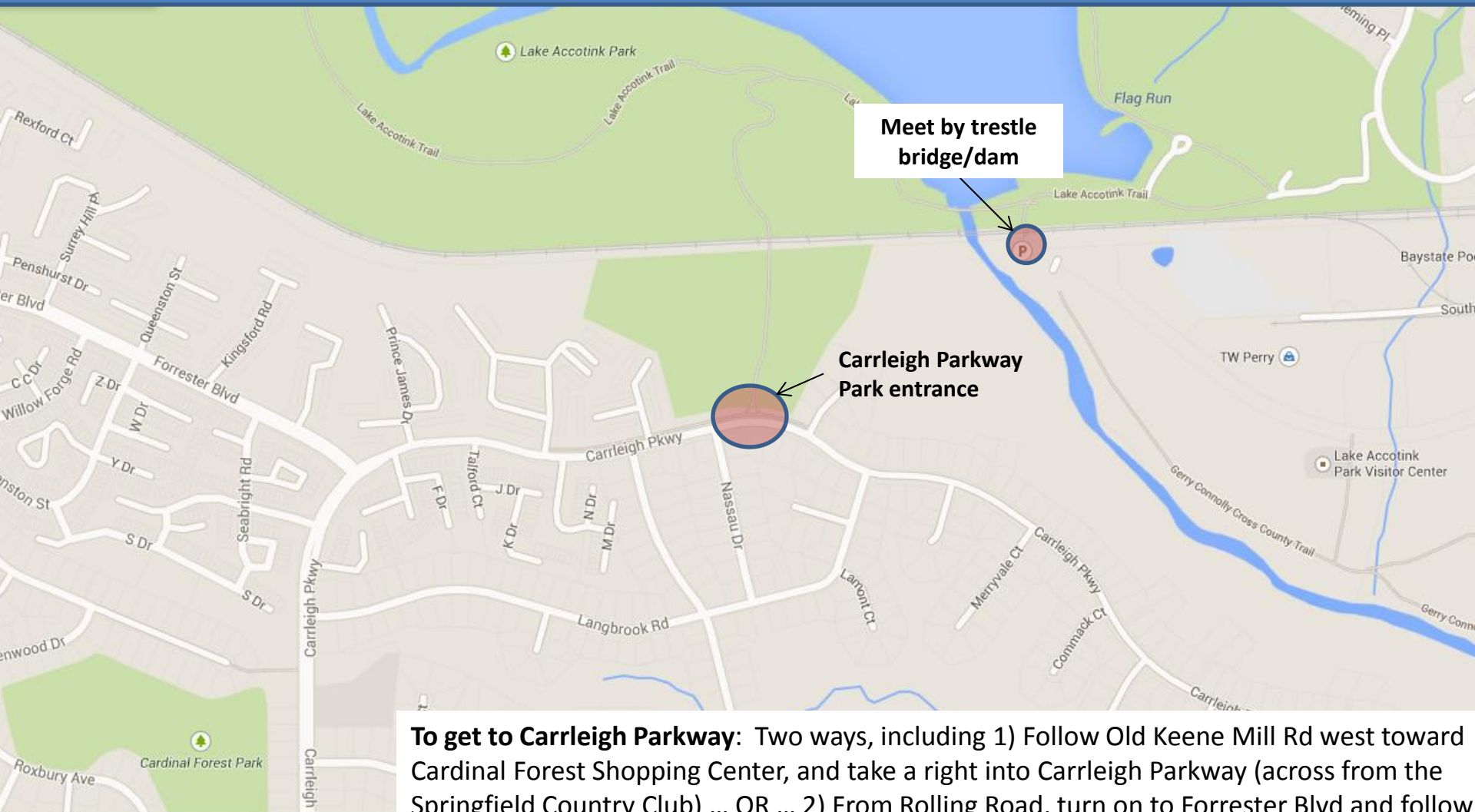


From West Springfield area

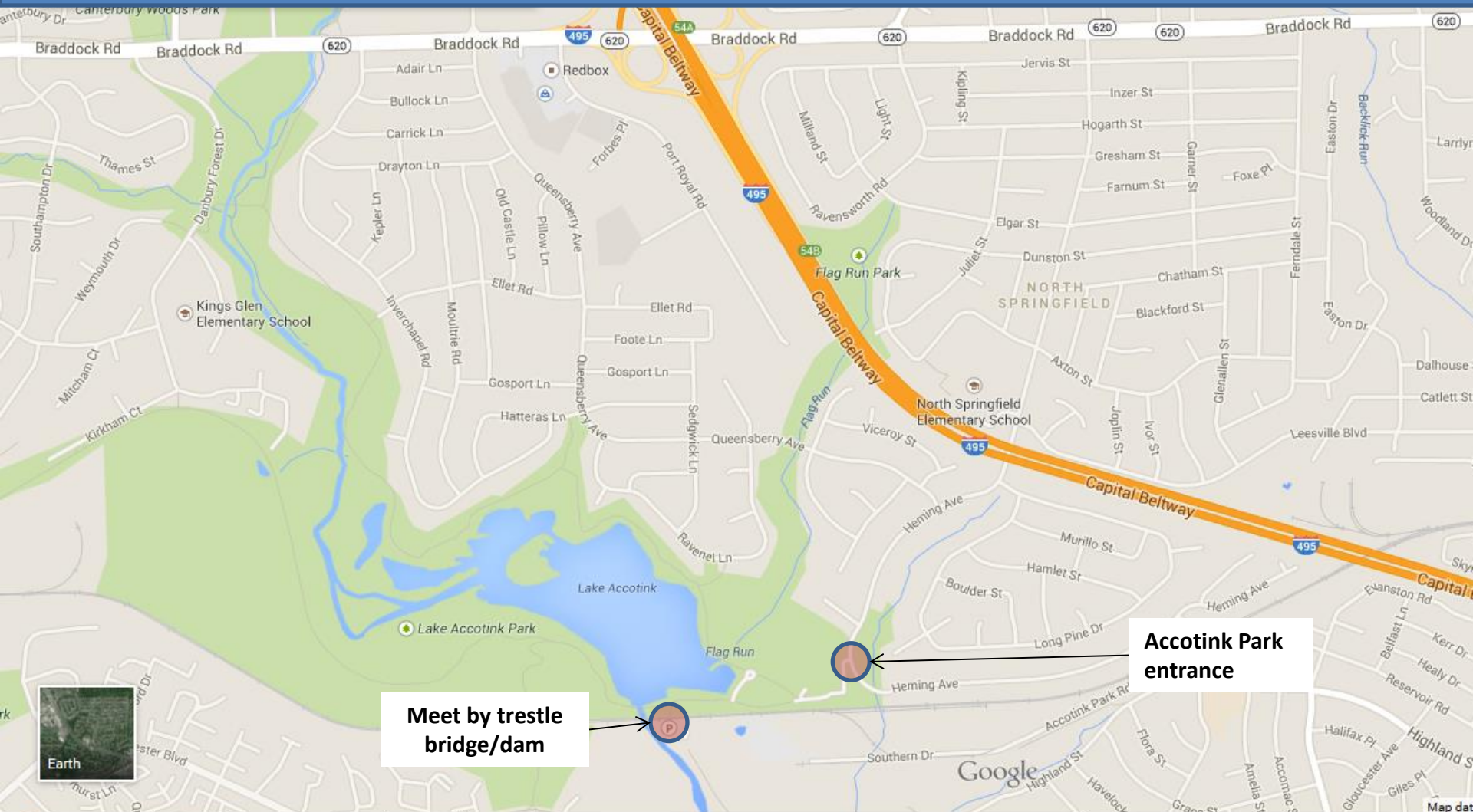
Park near Carrleigh Parkway entrance to Accotink Park (there's a sign for "Carrleigh Parkway Park" on the Carrleigh Pkwy...walk trail to Accotink Park (~1/2 mile walk))



To get to Carrleigh Parkway: Two ways, including 1) Follow Old Keene Mill Rd west toward Cardinal Forest Shopping Center, and take a right into Carrleigh Parkway (across from the Springfield Country Club) ... OR ... 2) From Rolling Road, turn on to Forrester Blvd and follow in ends at Carleigh Parkway; take a left and continue to the Carrleigh Parkway Park sign.

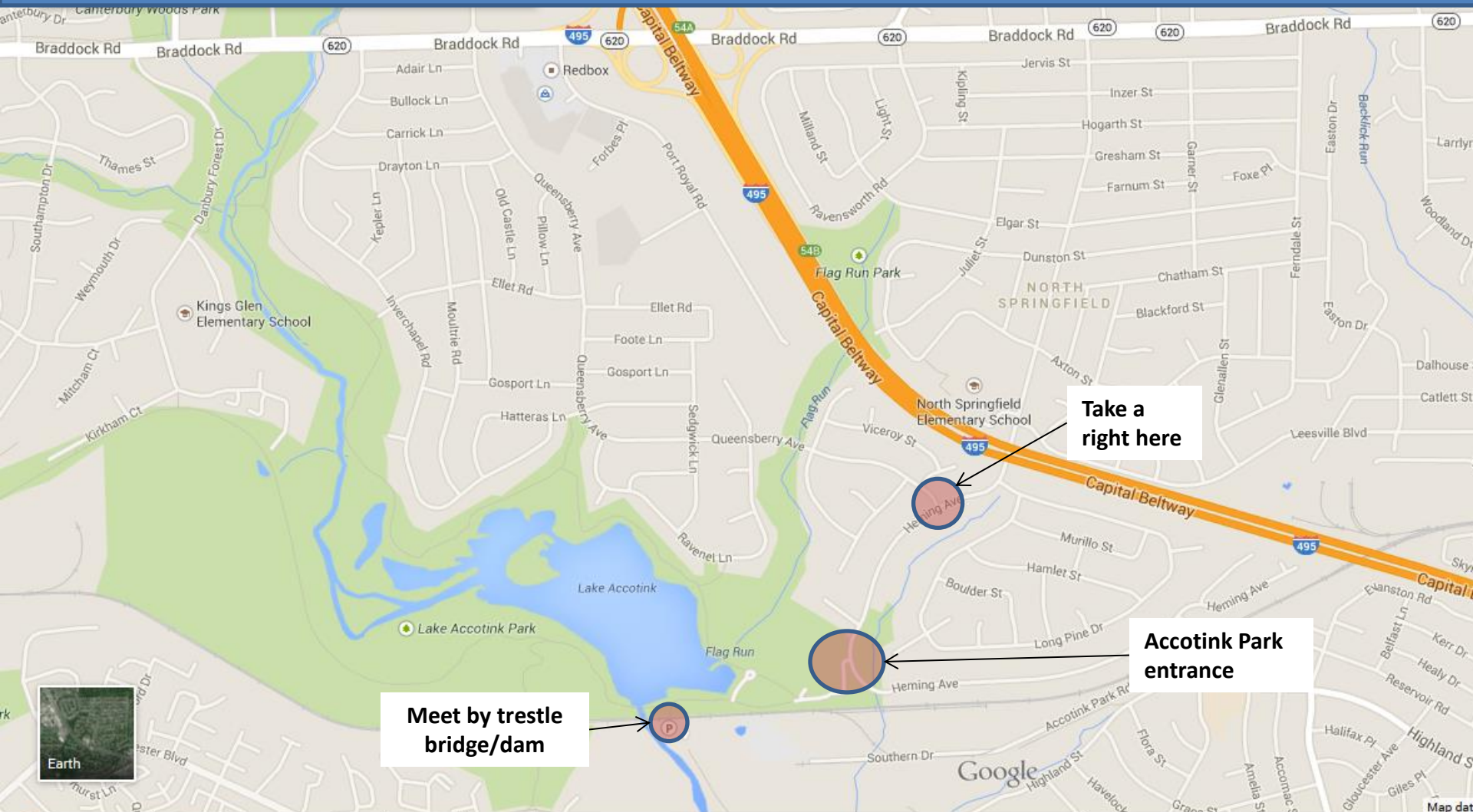
From North Springfield

From Braddock Rd, head south on Heming Ave...pass under the Capital Beltway and continue on Heming Ave...take a right into Accotink Park...walk to the railroad trestle bridge/dam; about a five minute walk)



From Ravensworth Farms

Follow Queensberry Ave south toward Heming Ave...take a right on Heming Ave...follow to Accotink Park sign (take right)...walk to the railroad trestle bridge/dam; about a five minute walk)



From Old Keene Mill Rd / Springfield Mall area

From Old Keene Mill Rd, head north on Hanover Ave...take a left onto Highland St...jog right onto Accotink Park Rd...take left into Accotink Park...follow the Park access road to the parking area near the railroad trestle bridge.

